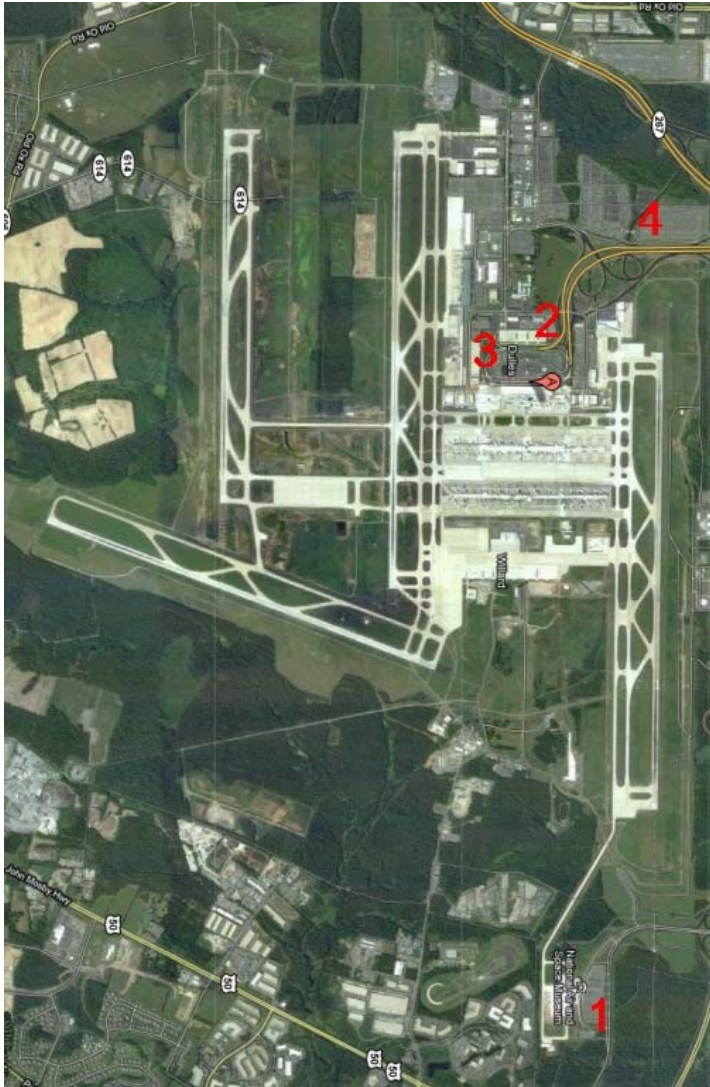


Spotting Guide to Washington Dulles Intl. Airport - IAD



IAD Frequencies:

ATIS:	134.85
Potomac Departure:	125.05 (1R/19L), 126.65 (1C/19C/30)
Potomac Final Approach:	120.45 (1R/19L), 124.65, 126.10 (1C/19C/12/30)
Tower:	120.1 (1R/19L), 120.25 (1C/19C) 134.425 (1L/19R 12/30)
Ground West:	132.45, 124.07 (high traffic times)
Ground East:	121.9



Spotting Guide to Washington Dulles Intl. Airport - IAD

All locations described below are designated spots for IAD airport. Do not go to any other place. There is no point of going anywhere else because all traffic can be seen or photographed from these fine spots. Please respect those simple rules so other spotters can enjoy IAD for years to come.

Location No.1 – Smithsonian Udvar-Hazy Museum: This spot is located next to the approach to runway 1R. Most international arrivals will land on runway 1R, however, early (before 1 PM) European arrivals might occasionally use 1C.

Camera: Lens requirements for this runway vary from where you park. You can park close to the entrance gate and use 200mm lens, however, trees might be on your way. To avoid the trees, you can park at the end of southern side of the parking lot, generally with a plenty of free spaces. The aircraft are a bit higher so expect about 200mm-300mm. Finally, you can walk just outside the parking booths into the grassy area near the approach when using shorter lenses.

Times: This location is good from about noon until sunset.

Parking: If you are driving there then you will have to pay \$15 for parking (however, entry to the museum is free). After 4 PM entry is parking free. *DO NOT park anywhere along the access road to the museum.*

Amenities: Restrooms and food are available inside the museum.

Directions: *From Washington, D.C., and points south:* I-66 West to Route 28 North (Exit 53B): Travel on Route 28 North for 5.3 miles. Exit at Air and Space Museum Parkway and follow the signs to the Steven F. Udvar-Hazy Center.

From points north: I-495 West (Capital Beltway) to the Dulles Toll Road West (Route 267). Exit the toll road at Route 28 South (Exit 9A) and travel south 3.5 miles. Exit at Air and Space Museum Parkway and follow the signs to the Steven F. Udvar-Hazy Center. (Note: if you are coming to the airport using the Dulles Airport Access Rd (toll-free portion) you can be ticketed by MWA Police for entering the airport and turning around to get on Sully Rd. Consider using the toll road for access to Sully Rd. unless you plan to spend time at the airport first).

From the airport: Taxi from the terminal costs \$12. VA Transit operates scheduled bus service from the main Terminal to the museum.

From Downtown Air & Space Museum: There is a direct bus link to/from the downtown Air & Space Museum

Location No.2 – Daily Parking Garage 1, Level 5:

Camera: If Runways 19L/C/R are in use for arrivals, this spot is good for arrivals with lens at least 400 mm since arriving traffic will be mostly domestic airliners. Runways 19C/L are used for almost all international arrivals. For departures from 1R you will need at least 400mm zoom (film camera) or 300 mm (digital) for wide body aircraft.

Times: This place is good for afternoon arrivals on runway 19L, or for afternoon departures from runway 1R. Most of the time runway 1R will be used for intl. departures (if winds are from the North). Departures from 1R start around 4:30pm, so if you are there and there are departures from Runway 30 don't be alarmed. ATC will switch to 1R with the first international departure (usually it's Air France 777). Virgin and British Airways usually take off from runway 30 or 1C.

Parking: Each half hour costs \$4; maximum for a day is \$17.

Amenities: None; however, the terminal can be accessed by the underground walkway.

Directions: Follow the signs to Daily Parking Garage 1.

Location No.3 – Daily Parking Garage 2, Level 5: This location is the best spot for viewing action on runway 1C/19C.

Camera: For photos from this location, you will need at least 300mm zoom. With 300mm lens you will get full frame of a 767 on the runway. Other aircraft, including bizjets and commuter airlines will likely taxi in front of you and will require less zoom.

Times: This location is good from early in the morning until about noon. After 12 pm sun will be facing you. This place is also good in cloudy weather, in which case, you can stay there all day long for photos of all international arrivals on runway 19C or domestic traffic on runway 1C (it depends on wind direction). If the winds are from the South/South East then departures will be on 19L and arrivals on 19C and 12.

Parking: \$4 for every 30 minutes; maximum for a day is \$17. Find an empty parking spot in front of parked UPS/DHL/ABX airplanes.

Amenities: None; however, the terminal is within walking distance (walkway is on Level 3).

Directions: Follow the signs to Daily Parking Garage 2.

Location No.4 – Economy Parking (Purple Lot): This spot is located in Long Term Parking lot (purple). The location is less preferred than parking garage No.1, however, it can be useful for morning arrivals on 19L.

Camera: Almost any focal length above 150mm can be used because you are free to move around the lot.

Times: All day.

Parking: First hour costs \$5, and the maximum charge for a day is \$10.

Amenities: none.

Directions: Follow the signs for economy parking.

SUMMARY OF OPERATIONS

During north operations when runways 1R/C/L are in use, the best spot for photos is at the museum parking lot. Almost all European arrivals will use runway 1R. All airlines coming from the North, East and South (Europe, Canada, North-Eastern, South-Eastern US) will land on runway 1R. Airlines coming from the west and south-west will land on runway 1C. In heavy traffic hours, Runway 1L will be used as well. Runway 30 is used only for departures never for arrivals (with the only exception being when there are very strong NW winds).

If there are southern operations, airlines from Europe, and the north-east in general (including Eastern Canada) will generally land on runway 19C. Traffic coming from the south will land on runway 19L, and airlines coming from the west and south-west will land on runway 19R and 12. Also keep in mind that some airlines will not follow those rules because they have gates on other sides of the airport. Korean, Ethiopian and ANA have tendency of requesting the most convenient runway but most of the time they use runway 19C/1C.

Frequent visitors to IAD are RAF C-130s and VC-10s, and Luftwaffe Airbus A310, C-160 and occasionally CL-601 (Bundeswehr's US Command Office is located at Dulles). These will always land on runway 19L or 1R (depends on the wind direction). VIP aircraft like Amiri Flight 747-400, 737-BBJ, Qatar 747SP, or Cargo operators Volga Dnepr AN-124, Saudi Arabian Cargo 742, etc. will usually park at the R ramp (by the new control tower) which is not visible from outside the airport or on the new ramp between 1C and 1L which is visible from the Daily Parking Garage 2. Landmark FBO gets pretty good VIP traffic too. Most charters will park at the Cargo 6 for which Daily Parking Garage 2 provides the best chance for spotting/photos. When heads of the states are visiting and are not using Andrews AFB, they will very likely use IAD. Most of those airplanes park at R Ramp but they might use the new mid-field Ramp (between 1C and 1L)

IAD is one of the busiest biz jets gateways in United States. On many days it surpasses Teterboro in biz jet aircraft movements. The biz jet traffic levels will depend whether Congress is in session or whether there are special events planned or in progress. In these scenarios, expect to see 50-100 biz jets a day during week-days while for the week-ends 25-50. If there are special events, expect a minimum of 100 biz jets operating from Dulles during those days. If you are biz jet lover then IAD is your place.

Spotting Guide to Washington Dulles Intl. Airport - IAD

Passenger Airlines at IAD:

AIRLINE	RWY	EQUIPMENT	ARRIVAL TIME
Aeroflot	1R, 19C	763, 332	Thu
Aer Lingus	1R, 19C	332	Daily
AeroSur	1R/L, 19L	733, 762	Late night arrival if 733
Air France	1C/R, 19C	388, 772, 77W, 343, 332	12:30pm, 4 pm (summer), 7pm
AirTran	1C, 19L/C	712	6 daily (ending June 2012)
All Nippon ANA	1C, 19C, 12	77W	daily around 9 am
American American Eagle	1C, 19C, 12	738, M80, 752 ER4, ERD	Multiple daily arrivals 4 daily arrivals
Avianca	1C, 12	319	Daily around 3 pm
Austrian Airlines	1R, 19C	76W	Daily around 2:30 pm
British Airways	1R, 19C	744, 772, 763	3 times daily
Cayman Airways	1R, 19L	733	Wed, Sat (summer schedule only)
COPA		73W	Daily (night arrival/early dep)
Delta	1C/R, 19L	M88, 73W, 738, 752, 319, 320	Multiple daily arrivals
DL Connection	1C/R, 19L	CRJ, CR7, CR9, E75	Multiple daily arrivals
Ethiopian	1C/R, 19L/19C	77L	Daily
Icelandair	1R, 19L/C	75W	X136 at 7pm
JetBlue	All	320, E90	20 daily arrivals
KLM	1R, 19C	332, 333	Daily (333 starting Apr 2012)
Korean Air	12, 1C, 19C	77W	Daily around 10 am
LAN			IAD-LIM-SLC approved. Start date unknown
Lufthansa	1R, 19L/C	744, 333, 343	1:10pm, 3:00pm, 4:00pm
Qatar Airways	1R, 19C	77W	Daily around 3pm
Saudi Arabian	1R, 19C	772	Daily around 2:00pm
Scandinavian SAS	1R, 19C	343	Daily at 3pm
Southwest	12, 1C, 19C	733, 73W	Multiple daily arrivals
Turkish Airlines	1R, 19C	332, 333, 343	X6 around 3:30 pm
United Airlines (UA)	All	319, 320, 752, 763, 777	Multiple daily arrivals
United Airlines (CO)	All	735, 73W, 73H, 75W	Multiple daily arrivals
United Express (ASH, CHO, CJC, GJS, LOF, ASQ, SKW, UCA)	All	ER4, E70, SF3, CRJ, CR7, DH2, DH4	Multiple daily arrivals
TACA	1C/R, 12, 19C	319, 320, 321	4 daily arrivals
US Airways Express (ASH, PDT, JIA, MES)	1C/R, 19L/C	CRJ, CR7, CR9, DH2, SF3	6 daily arrivals
Virgin Atlantic	1R, 19C	343, 346	2 daily – 3:10pm, 8:55pm
South African	1C/R, 19L/C	342, 343, 346	Daily at 6:30am, dep. at 5:20pm

Spotting Guide to Washington Dulles Intl. Airport - IAD

Cargo Airlines at IAD:

AIRLINE	RWY	EQUIPMENT	ARRIVAL TIME
FedEx	1C, 19C	AB6, 313, D10, 752, 72F	4 daily
UPS	1R, 19L	752, AB6	2 daily

Other Operators at IAD:

AIRLINE	RWY	EQUIPMENT	ARRIVAL TIME
Foreign Military US Military	1R, 19L 1C, 19C	C130, C160, VC10 P3, C130, C20, C21, C135, C17, 319	Unscheduled Unscheduled
VIP	1C/R, 19L/C	BBJ, 744, 74L, 757 etc	Parking: Ramp between 1C/L, R Ramp
Charters	1C, 19C, 12	727, 737, 757, other	Unscheduled
Vision Air	1C, 19C	733, 734, 73H, 762	Unsched, parking: Cargo 6, R Ramp
Other Cargo	1C, 19C	All Cargo types	Unscheduled

NOTE:

Changes to schedules:

- **Aeroflot** is now operating the weekly flight into IAD using A330 equipment
- **AeroSur** is operating mainly a 733 twice a week arriving and departing late at night.
- **Continental** is operating two trans-Atlantic routes 3 times a day with 75Ws. Two more are planned for Summer 2012
- **KLM** will be introducing Airbus A333 to the route 4x/week for the Summer 2012 schedule

- This information is provided as a courtesy to local area spotters and no warranties of any kind are expressed or implied.
- Please be courteous to local spotters and citizens (after all they live there), as well as to local law enforcement (after all they have a job to do).
- For any suggestions, issues, or recommendations please [contact us](http://www.washbaltpotters.net/contact.us) at <http://www.washbaltpotters.net/contact.shtml>

Credits

This guide was written and edited by Washington Baltimore Spotters Group members Blend Qatipi, Rafal Szczypek and Sunil Gupta